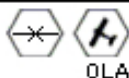
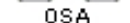
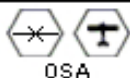


### MANEUVER SCHEDULE

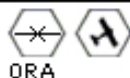
Spin check required for all zero-speed maneuvers.



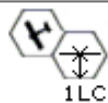
OLA



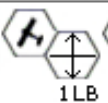
OSA



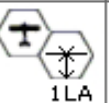
ORA



1LC



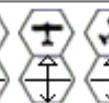
1LB



1LA



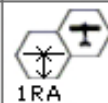
1SB



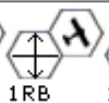
1SA



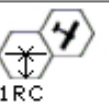
1SC



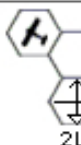
1RA



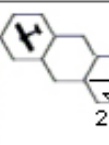
1RB



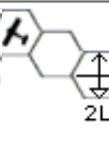
1RC



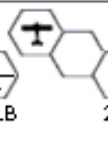
2LD



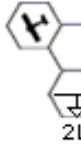
2LC



2LB



2LA



2LE



2LF



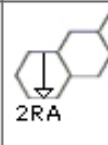
2SB



2SA



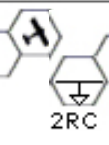
2SC



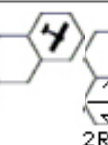
2RA



2RB



2RC



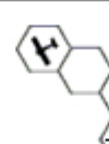
2RD



2RE



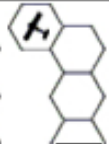
3LG



3LD



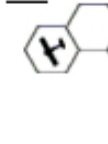
3LC



3LB



3LA



3LH



3SB



3SA



3SC



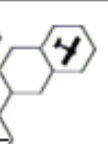
3RA



3RB



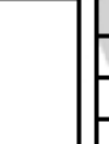
3RC



3RD



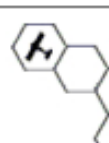
3RH



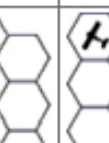
3RG



4LE



4LB



4LA



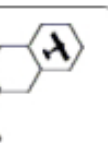
4SB



4SA



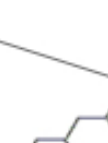
4SC



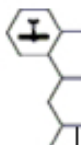
4RA



4RB



4RE



4LG



4



4



4

5SB

5SA

5SC

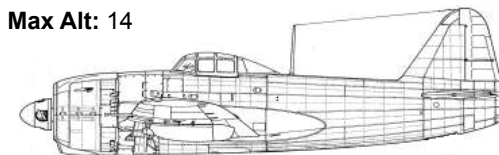


4RG

Turn	Man.	Alt
1		
2		
3		
4		
5		
6		
7		
8		
9		
10		
11		
12		
13		
14		
15		
16		
17		
18		
19		
20		
21		
22		
23		
24		
25		
26		
27		
28		
29		
30		
31		
32		
33		
34		
35		

### N1K1-J George

Max Alt: 14



### PERFORMANCE

Acceleration	3
Deceleration	2
Climb	3
Dive	4

### FIREPOWER

Weapon	Arc	Trv	Range in Hexes			
			1	2	3	4
4 x 20mm CN	1	↕	16	12	8	4
Ammo:	□□□□	□□□□	□□□□			
2 x 7.7mm MG	1	↕	2	1	1	0
Ammo:	□□□□	□□□□	□□□□	□□□□		

### DAMAGE

Engine 1	□□□□	□□□□	□□
Wings:	□□□□	□□□□	□□□□
Fusel.:	□□□□	□□□□	□□□□
Pilot			M S D

### NOTES